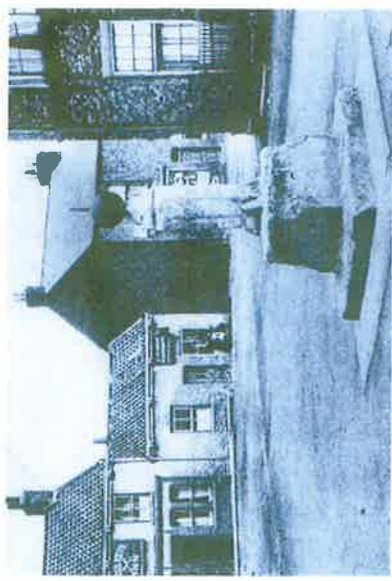
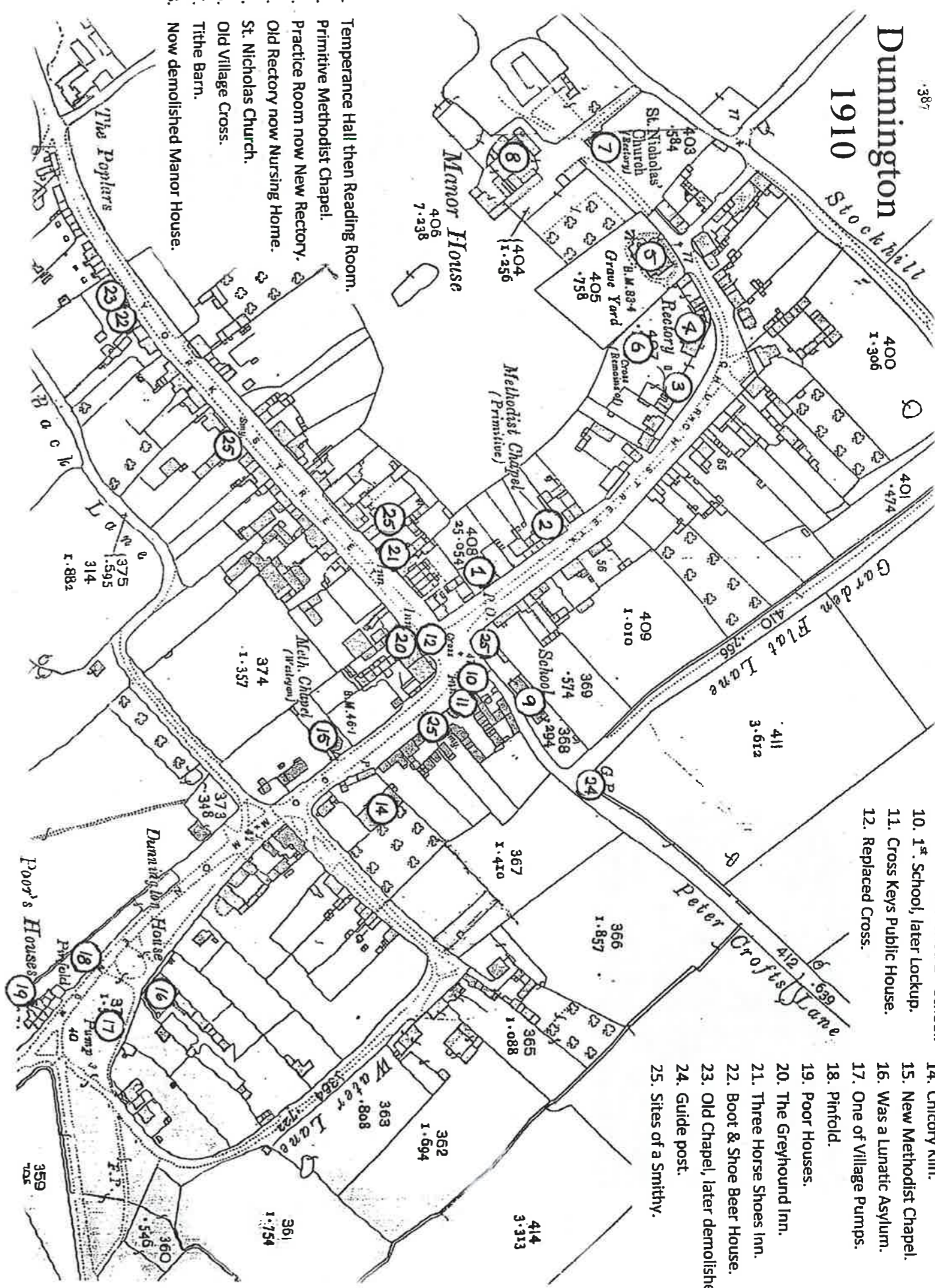


## A Walk around Dunnington



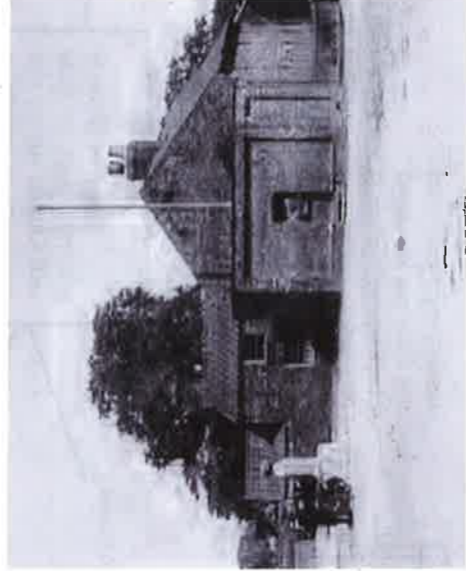
The Square circa 1910

## Dunnington through the Ages

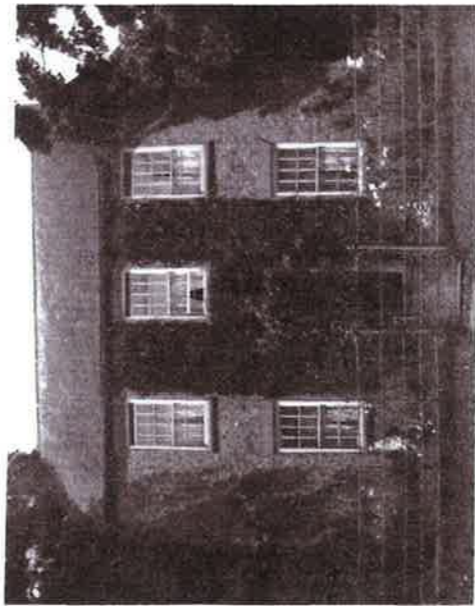


DTTA 1.1.11.VA.12

Demolished Lockup in the Square



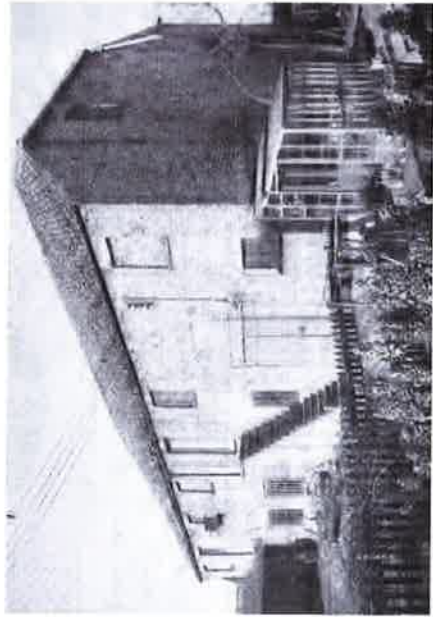
Demolished Manor Farmhouse (Copper Beeches)



Demolished houses between 37-39 Church Street

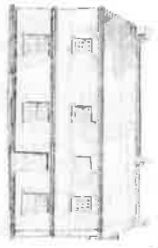


Demolished Chicory Kilm 11-13 Common Road





**Dunnington Halt**  
Derwent Valley Light Railway  
Opened 19th July 1913  
Line closed 30th Sept 1981



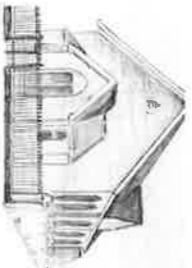
**Boot and Shoe**  
This was the site of a beer house called Boot and Shoe. Also the home of the shoemaker Mintooff and nearby was the first Methodist Chapel



**Henry Hornshaw and Son**  
Cart and Wagon Works, Cart and Rully builders, Plough makers and undertakers.



**York Street**  
The site of another chicory kiln



**Methodist Chapel**  
The Chapel was built in 1868 to replace the one in York Street near the Boot and Shoe beer house



**The last chicory kiln in the village.**  
Demolished in the 1980's. 3 cottages between 11-13 Common Road built on the site



**The Lunatic Asylum**  
This house was a private lunatic asylum from 1828 to 1880. Initially it was well run but by the 1860's conditions were so bad it was threatened with closure. Change of management resulted in better conditions and it finally closed in 1880. Buildings associated with it became known as the Alley



**Medieval Cross.**

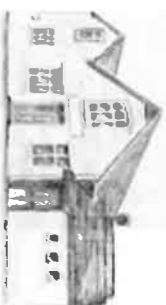
In the 1987  
Rectory Garden



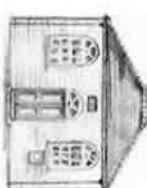
**The Old Rectory's**  
Have been rebuilt many times since the 17th century. In 1824 a new Rectory completed, the two buildings now used as a Nursing Home.



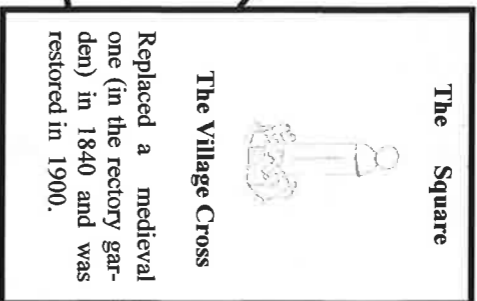
**St Nicholas Church**  
Dates from Norman times and has a medieval Piscina. It was extensively remodelled in 1840-1 and again in the 1870's.



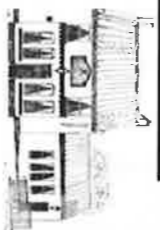
**Reading Room**  
It began as a temperance hall in 1889 and was acquired for the village in 1902. Part of it was also used as a post office now that part is the Library



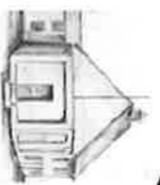
**The Primitive Methodist Chapel**  
built in 1852 and closed in the early part of the 20th century



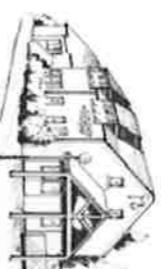
**The Village Cross**  
Replaced a medieval one (in the rectory garden) in 1840 and was restored in 1900.



**Cross Keys Public House**  
Has been a village Pub since at least 1823. In it's yard there was a chicory kiln and later an SP bookmaker



**The Lockup**  
Built on the site of an earlier school. The Lockup was built in 1850 and had two cells, and it was demolished in 1955.



**The Doctor's Surgery**  
On the site of the Old School which was built in 1837 and extended in 1905-6. It was still used until 1988 even when the new school was built in 1968-9. Note the school bell over the entrance

**York Street**

- 10 The Three Horseshoes Inn
- 18 Henry Hornshaw and Son cart and wagon works, rully builders, plough makers and undertakers.
- 24 18th century house
- 26 Old Post Office.
- 40 18th century house.
- 41 Boot and Shoe Beer house owned by John Mintooff shoemaker and diarist. Nearby was the first Methodist Chapel.
- 15a and b. Site of Fountains shop and Herbert's wheelwright business.
- 13 Fabric Gallery Interiors site of a chicory kiln.
- Greyhound Public House previously known as the Blacksmith's Arms.
- 1 Site of the Post Office after 1st World War.

**Church Street**

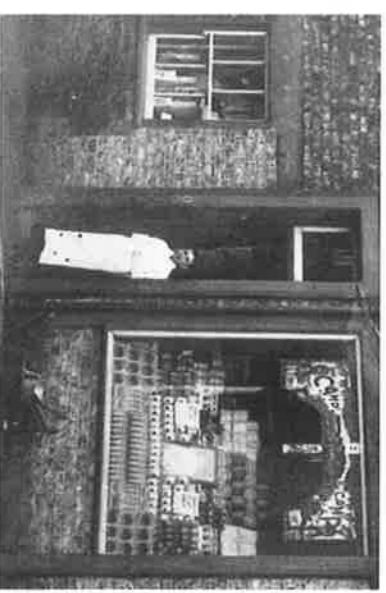
- 10,12,14 Listed buildings. Early 19th century.
- 16. Primitive Methodist chapel.
- 28 New rectory. built on the site of Practice Room which was a church hall and used as a school dining room. It was also used as a village library. In the garden of the Rectory is a medieval cross.
- 30 Dunnington Lodge, originally the rectory built in early 19th century but now a Nursing Home.
- The Church. Has late 11th century origins and has been added and extended over the centuries. Has a medieval piscina and two sedilia
- 39-37 Site of two demolished 17th century houses
- 18 Mid 19th century farmhouse.
- 15 18th century house.
- 5 Craven house a mid 18th century farm house
- Doctor's Surgery. The site of the village school from 1838 to 1980's.

**Common Road**

- 1 Site of an early school and then the Lockup.
- 1a Early 18th century house.
- Cross Keys Public House. Has been a pub since at least 1823. Extension on the side housed a bicycle shop and in the yard there was a chicory kiln.
- 7 Bells general store.
- Between 11-13 Houses built on the site of the large chicory kiln demolished in the 1980's.
- The Green. Chestnut trees were planted in honour of the wedding of Edward V11 and Alexandria. On the Green was one of the village water pumps.
- Dunnington House on the Green was the site of the Lunatic Asylum and the range of buildings parallel to Intake Lane was known as the Alley. These were demolished in the 1930's
- Methodist Chapel was built in 1868.

**Water Lane**

- 10 Pump Cottage has the last village pump.
- 12 Oldest house in the village



**Fountains Shop 15 a-b York Street**